

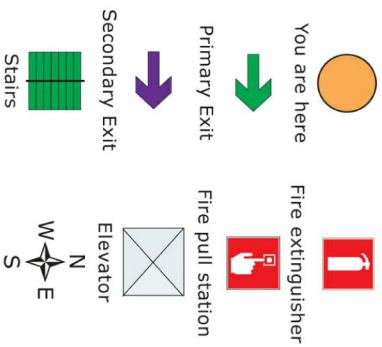
EVACUATION MAP

REMEMBER

- Find out where the emergency exits are located
- Find out how the fire alarm works
- Find out where the nearest fire extinguisher is located
- If the corridor is filled with smoke - stay in your room
- If the corridor is free from smoke - leave the building by the nearest **EMERGENCY EXIT**
- Air and visibility is always best nearest the floor

DO NOT USE THE ELEVATOR

LEGEND



- UTILITIES ACCESS LOCATIONS**
- 1 - Gas
 - 2 - Fire Hydrant
 - 3 - Electrical Intake
 - 4 - Electrical Panel

